



## Rooms for Hire

## SWIMBRIDGE JUBILEE HALL

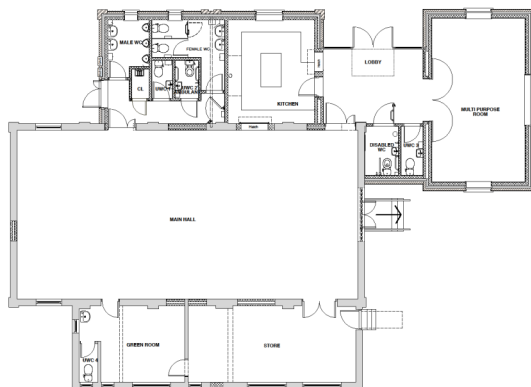
## Swimbridge Jubilee Hall

Registered charity no: 300983

| Room         | Size        | Max capacity              |
|--------------|-------------|---------------------------|
| Main Hall    | 15 x 7.5m   | 150 seated / 200 standing |
| Meeting Room | 7.25 x 4.1m | 35 seated / 50 standing   |
| Green Room   | 4.6 x 3.2m  | -                         |
| Foyer        | 4.4 x 3.2m  | -                         |
| Kitchen      | 4.0 x 4.5m  | -                         |

The hall was completely refurbished in 2014 and is now a modern, adaptable space. The hall and the meeting room can be used as separate areas, and the doors between the meeting room and foyer can be folded back to make a large reception room.

A layout of the hall space is below:



### Contact us ...

For full details on the facilities, to arrange a viewing or booking, please contact the Booking Secretary. If there is no answer please leave a message or send a text.

Tel: **077 1425 6379**

Email: [swimbridgejubileehall@outlook.com](mailto:swimbridgejubileehall@outlook.com)

Write: Swimbridge Jubilee Hall, Barnstaple Hill  
Swimbridge, Barnstaple, EX32 0PQ

Website: [www.swimbridgejubileehall.com](http://www.swimbridgejubileehall.com)



Swimbridge Jubilee Hall

All bookings are subject to the standard booking of hire.

**Getting there ...** Swimbridge is situated between Barnstaple and South Molton and has easy access to the A361. The hall has designated disabled car parking spaces with a limited number of general car parking spaces and six bike racks. The public bus service stop is immediately outside the village hall entrance. Please check bus timetables for events.

For further information visit  
[www.swimbridgejubileehall.com](http://www.swimbridgejubileehall.com)



### Hire Charges as from 1 Sept 2022

Swimbridge Jubilee Hall was extensively improved in 2014. Our excellent modern and up to date facility sits in the heart of the picturesque village of Swimbridge between the towns of Barnstaple and South Molton.

A perfect venue for community events ... meetings ... conferences ... keep fit ... indoor sport ... dinners ... parties ... weddings ... live music ... art exhibitions ... theatre ... cinema ... dance ... and much more.

Car parking ... wheelchair access ... disabled toilet ... induction loop system ... baby changing facility ... commercial kitchen ... maple dance floor ... alcohol licence .. PRS/PPL licence ... full premises licence ...wi-fi enabled.

**Enquiries: 077 1425 6379**

[www.swimbridgejubileehall.com](http://www.swimbridgejubileehall.com)

## The Main Hall



The hall is rented by session

Morning: 8 am — 1 pm

Afternoon: 1 pm — 6 pm

Evening: 6 pm — 11.45 pm\*

\*an extension of time may be available on request.

There is an option to have a half-session, which equates to a 2.5 hour period.

|               |        |   |
|---------------|--------|---|
| Whole session | £50.00 | A 10% discount is available to community groups within the parish |
| Half-session  | £30.00 |   |

The hire of the main hall includes a fully equipped commercial kitchen with dishwasher, separate toilets and green room. The green room is suitable as a cloakroom, performers waiting room and workshop space.

The main hall is licensed for a wide variety of events and accommodates 150 seated/ 200 standing. It comfortably seats around 70 for a dinner event or 90 for theatre. This room has a hearing induction loop system. Wi-fi.



## The Meeting Room



The meeting room is rented by session

Morning: 8 am — 1 pm

Afternoon: 1 pm — 6 pm

Evening: 6 pm — 11.45 pm \*

\*an extension of time may be available on request.

There is an option to have a half-session, which equates to a 2.5 hour period.

|               |        |   |
|---------------|--------|---|
| Whole session | £25.00 | A 10% discount is available to community groups within the parish |
| Half-session  | £20.00 |   |

This room is suitable for meetings, workshops, keep fit classes, a bar area, a reception room and much more. It also benefits from Cat 5 wiring for computer use.

The meeting room includes a tea-making facility, sink and fridge. There is access to the foyer toilets including a disabled toilet and baby changing facility. Wi-fi.

The double doors open onto the foyer giving an option to use for a large reception area.

The meeting room can accommodate 35 seated / 50 standing.



## Weddings, Parties and Events

*A perfect venue for that special occasion*

Our light, neutral walls and quality maple flooring provides you with a perfect venue to dress for your occasion.

The hire charge for weddings and events is £500.

This includes inclusive use of all the rooms. Tables, chairs and day to day crockery. However to make your day *extra* special additional white tablecloths, crockery and champagne glasses, etc are available to hire on request.



The hire charge includes inclusive use of all rooms for the day of your event, the afternoon and evening prior and the morning after the booking to allow for setting up and clearing up.

Parties and events wishing only to use the whole hall for **one day** will be charged at the rate of £200 which will include the use of tables, chairs and day to day crockery.

Sessional hire rates are also available for the main hall and meeting room, shown within this brochure

A licensed bar is available on request.